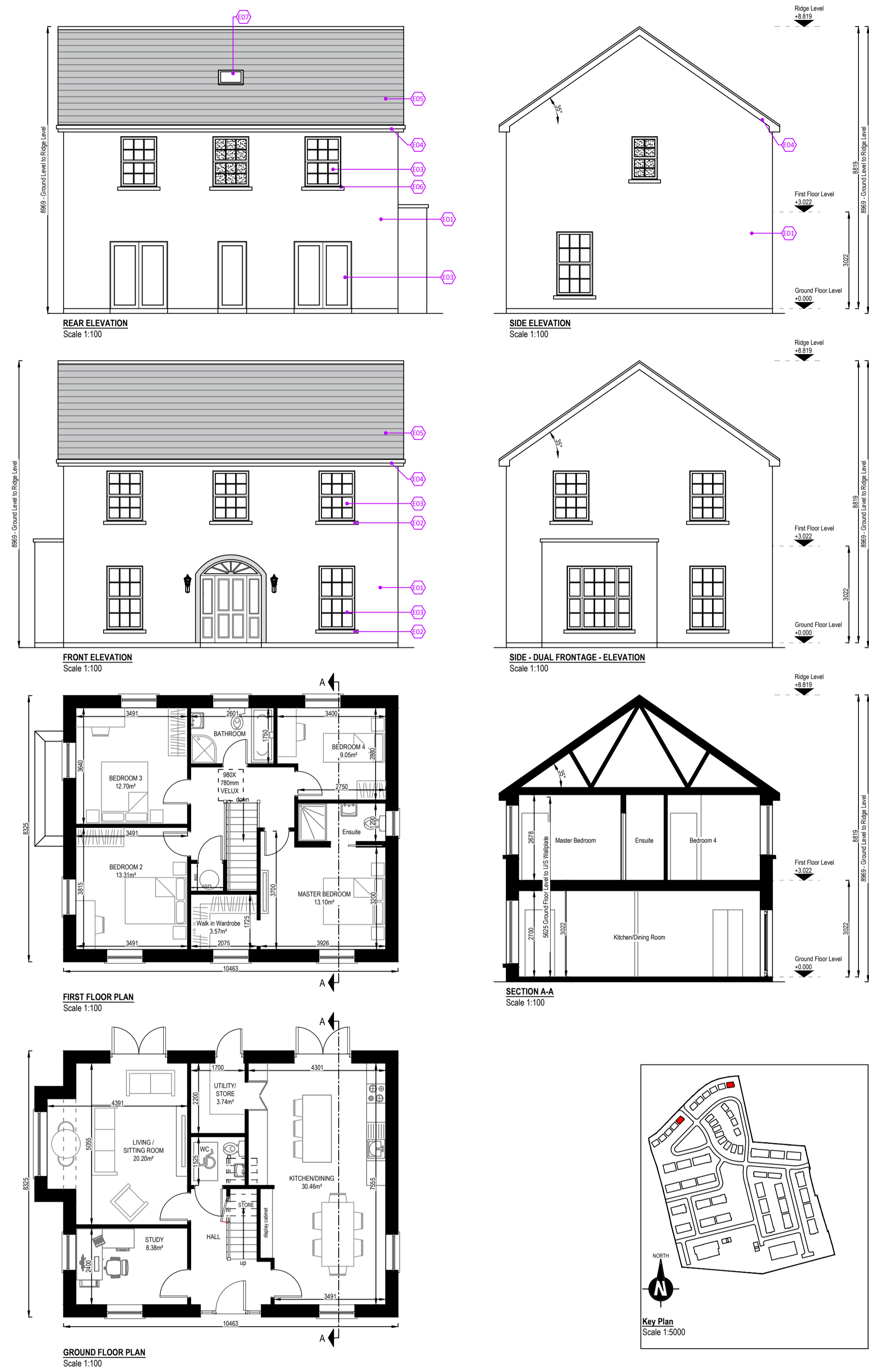
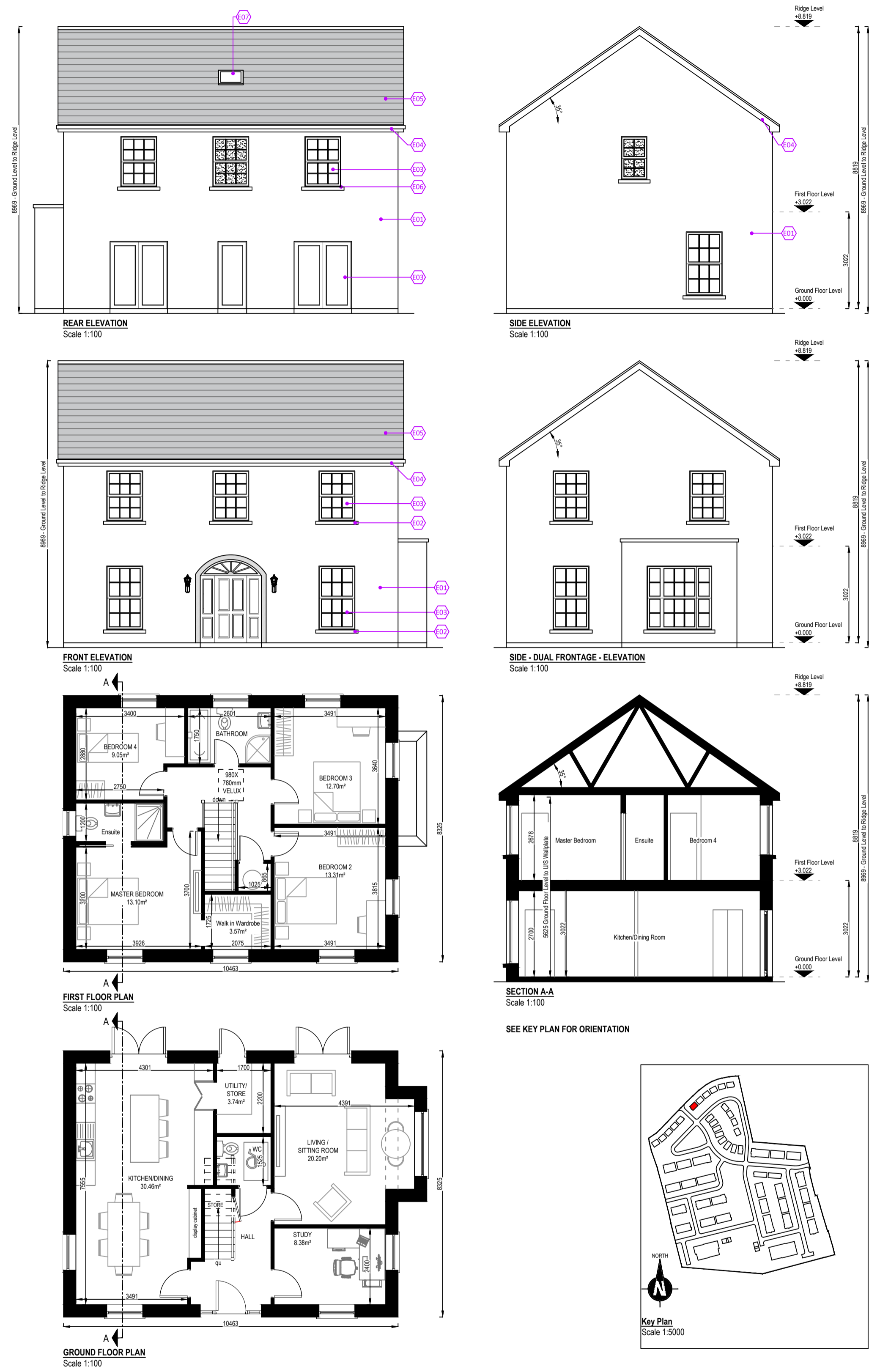


**HOUSE TYPE A-DF (DUAL FRONTAGE) - SITE NO.'s 1 & 7**



**HOUSE TYPE A-DF (DUAL FRONTAGE) - SITE NO. 6**



ARTIST'S IMPRESSION

**SEE KEY PLAN FOR ORIENTATION**  
**FOR FINISHED FLOOR LEVELS**  
**SEE DWG NO.'s 24004-A-112 & 113**

	Required	House Type A-DF
Ground Floor Area	-	75.78m <sup>2</sup>
First Floor Area	-	73.23m <sup>2</sup>
Gross Floor Area	110m <sup>2</sup>	149.01m <sup>2</sup>
Min. Main Living Room	15.00m <sup>2</sup>	20.20m <sup>2</sup>
Aggregate Living Area	40m <sup>2</sup>	50.66m <sup>2</sup>
Bedroom 1	13m <sup>2</sup>	13.10m <sup>2</sup>
Bedroom 2	11.4m <sup>2</sup>	13.31m <sup>2</sup>
Bedroom 3	11.4m <sup>2</sup>	12.70m <sup>2</sup>
Bedroom 4	11.4m <sup>2</sup>	9.05m <sup>2</sup>
Aggregate Bedroom Area	43m <sup>2</sup>	48.16m <sup>2</sup>
Storage	6m <sup>2</sup>	6m <sup>2</sup>

1:100



ARTIST'S IMPRESSION

**SEE KEY PLAN FOR ORIENTATION**  
**FOR FINISHED FLOOR LEVELS**  
**SEE DWG NO.'s 24004-A-112 & 113**

	Required	House Type A-DF
Ground Floor Area	-	75.78m <sup>2</sup>
First Floor Area	-	73.23m <sup>2</sup>
Gross Floor Area	110m <sup>2</sup>	149.01m <sup>2</sup>
Min. Main Living Room	15.00m <sup>2</sup>	20.20m <sup>2</sup>
Aggregate Living Area	40m <sup>2</sup>	50.66m <sup>2</sup>
Bedroom 1	13m <sup>2</sup>	13.10m <sup>2</sup>
Bedroom 2	11.4m <sup>2</sup>	13.31m <sup>2</sup>
Bedroom 3	11.4m <sup>2</sup>	12.70m <sup>2</sup>
Bedroom 4	11.4m <sup>2</sup>	9.05m <sup>2</sup>
Aggregate Bedroom Area	43m <sup>2</sup>	48.16m <sup>2</sup>
Storage	6m <sup>2</sup>	6m <sup>2</sup>

1:100

**COPYRIGHT**  
THIS DOCUMENT AND ALL DATA CONTAINED HEREIN REMAIN THE PROPERTY OF O'DALY ARCHITECTS. IT IS SUPPLIED IN CONFIDENCE FOR EVALUATION PURPOSES ONLY UNDER THE CONDITION THAT SAME IS NOT USED, REPRODUCED OR TRANSMITTED IN ANY WAY TO OTHERS WITHOUT WRITTEN CONSENT.

**DIMENSIONS**  
UNLESS OTHERWISE STATED, DIMENSIONS SHOWN ARE IN MILLIMETRES. NO DIMENSIONS TO BE SCALED FROM THIS DRAWING. ALL DIMENSIONS TO BE CHECKED BY THE CONTRACTOR ON SITE AND ANY DISCREPANCIES TO BE REPORTED TO THE ARCHITECT.

TAG NO.	ELEVATION TAG NOTE
E01	Fine aggregate wet dash finish
E02	Limestone sills & surrounds to front & dual front elevations
E03	A-rated uPVC windows & composite front door
E04	Selected fascia, soffits & rainwater goods
E05	Black concrete roof tile complete with continuous dry verge & dry ridge systems
E06	Precast concrete sills to rear
E07	Velux rooflight

**THIS DRAWING SHOULD BE READ IN CONJUNCTION WITH THE HOUSING QUALITY ASSESSMENT SCHEDULE DOCUMENT REF. 24004-AR-HQA**



1st Floor - Unit 13(B) - Mullaghboy Industrial Estate  
Navan - County Meath - Tel: (046) 9021233  
Mobile: (087) 0525233 - Email: ivan@odaly.ie

**Client:**  
Loughlynn Developments Ltd.

**Project Name and Address:**  
Proposed Large Residential Development (LRD) at "Cropark 1st Division", Kildare Road, Trim, County Meath.

**Project Stage:**  
Planning

**Drawing Name:**  
House Type A-DF (Dual Frontage)  
4 Bedroom, 2 Storey, Detached, Dual Frontage House  
Site No.'s 1, 6 & 7

<b>Drawn By:</b> iod	<b>Scale:</b> as shown @ A1
<b>Checked By:</b> iod	<b>Date:</b> 04.06.2026
<b>Drawing Number:</b> 24004-AR-201	<b>Revision:</b> P01